

# MPT™

**EZGO**

A Textron Company



**EZGO**

A Textron Company

THE FINEST UTILITY VEHICLES  
IN THE WORLD.™



# Roll with the changes.

Golf Courses, Parks, Stadiums, Colleges and Universities.

The **MPT** is at home in any environment. No matter how **big the job**,  
the MPT will carry its **weight** with a crosslink polyethylene bed.

The **powerful engine** hauls a house. And the exclusive E-Shield process  
prevents corrosion and holds its own in even the **harshest elements**.



# It's a dirty job.

A roll-up-your-sleeves mud bath that takes  
a tough person and an even tougher machine.

One that's field-tested everyday and ready to get the job done without crying about the weather.  
Chalk it up to a bucket load of innovations.

A quieter engine, an improved clutch, better cold starts  
and a 48-volt electric model with E-Z-GO's Precision Drive System™  
make the MPT the MVP on the job.



MPT 1000

MPT 1200





MPT 800

# A solid work record.

The Multi-Purpose Truck is the product of E-Z-GO's  
fifty years of expertise. You can count on the MPT  
when everyone else is counting on you.  
Put it to the test. You'll love where it takes you.

## MPT 800

(Gas or Electric)

## MPT 1000

(Electric)

## MPT 1200

(Gas)

### GAS

<b>Engine:</b>	9.0 hp (6.7kW) Rated, 4 cycle, 295 cc (18 ci) twin cylinder, air cooled
<b>Lubrication:</b>	Pressurized oil system, washable permanent filter.
<b>Battery:</b>	12-volt maintenance free
<b>Drive Train:</b>	Automatic, continuously variable transmission (CVT) forward and reverse
<b>Fuel Tank:</b>	6.0 gal (23L)
<b>Speed:</b>	12.5 - 13.5 mph (20-22 kph)

11.0 hp (8.2kW) rated, 4 cycle, 350 cc (21 ci) twin cylinder, air cooled
Pressurized oil system, washable permanent filter
12-volt maintenance free
Automatic, continuously variable transmission (CVT) forward and reverse
6.0 gal (23L)
12.5 - 13.5 mph (20-22 kph)

### ELECTRIC

<b>Motor:</b>	36 volt DC high efficiency non-vented senes wound
<b>Drive Train:</b>	Direct motor shaft connected to transaxle pinion shaft
<b>Batteries:</b>	Six, 6 volt heavy duty, deep cycle (107 minute, 220 amp-hour)
<b>Charger:</b>	PowerWise™ fully automatic
<b>Speed:</b>	12.5 - 13.5 mph (20-22 kph)

48 volt DC high efficiency shunt wound
Direct motor shaft connected to transaxle pinion shaft
Eight, 6 volt deep cycle (115 minute, 225 amp-hour)
Lester® fully automatic
13.5 mph (22 kph)

<b>Brakes:</b>	Dual rear wheel self-adjusting mechanical drum brakes. Automatic park brake release with self-compensating system. Optional hydraulic front disc brakes
<b>Suspension:</b>	Heavy-duty leaf springs with hydraulic shock absorbers
<b>Steering:</b>	Rack and pinion
<b>Weight:</b>	800G: 780 lbs (355kg) dry / 800E: 675 lbs (305kg) without batteries
<b>Length:</b>	103 in (262cm)
<b>Width:</b>	47 in (119cm)
<b>Height:</b>	47 in (119cm) (top of steering wheel)
<b>Ground Clearance:</b>	5 in (at differential) (12.7cm)
<b>Wheel Base:</b>	66 in (168cm)
<b>Front Wheel Tread:</b>	38 in (97cm)
<b>Rear Wheel Tread:</b>	38 in (97cm)
<b>Turning Clearance Diameter:</b>	19 ft (5.8m)
<b>Tires:</b>	18 x 8.50 x 8 (4 ply rated)
<b>Load Capacity:</b>	800 lbs (360kg) including operator, passenger, accessories and cargo, 500 lbs (230kg) max. bed load
<b>Load Bed Size:</b>	46 in wide, 35 in long, 10 in deep (117cm x 89cm x 25cm), 9 cu ft (.25 cu m)
<b>Body:</b>	Front: Flexible RIM plastic. Rear: Lightweight steel
<b>Cargo Bed:</b>	Steel with heavy-duty bed liner with tailgate cover. Hinged, removable tailgate and sides
<b>Chassis:</b>	Tubular steel with E-Shield™
<b>Additional Features:</b>	Dash mounted key switch, reverse warning indicator, integral handgrip on hip restraints, manual forward/reverse selector

Dual rear wheel self-adjusting mechanical drum brakes. Automatic park brake release with self-compensating system. Optional hydraulic front disc brakes
Heavy-duty leaf springs with hydraulic shock absorbers
Rack and pinion
810 lbs (370kg) without batteries
111 in (282cm)
50 in (outside at bed) (127cm)
47 in (119cm) (top of steering wheel)
5 in (at differential) (12.7cm)
77 in (196cm)
38 in (97cm)
38 in (97cm)
22 ft (6.7m)
18 x 8.50 x 8 (4 ply rated)
1,000 lbs (454kg) including operator, passenger, accessories and cargo; 600 lb (270kg) max. bed load
45 in wide, 36 in long, 13.75 in deep (114cm x 91cm x 35cm), 13 cu ft (.37 cu m)
Front: Flexible RIM plastic. Rear: Lightweight steel
Rotomolded crosslink polyethylene. Hinged, removable tailgate
Tubular steel with E-Shield™
Dash mounted key switch, reverse warning indicator, integral handgrip on hip restraints, manual forward/reverse selector

Dual rear wheel self-adjusting mechanical drum brakes. Automatic park brake release with self-compensating system. Optional hydraulic front disc brakes
Heavy-duty leaf springs with hydraulic shock absorbers
Rack and pinion
860 lbs (390kg) dry
111 in (282cm)
50 in (127cm)
47 in (119cm) (top of steering wheel)
5 in (at differential) (12.7cm)
77 in (196cm)
38 in (97cm)
38 in (97cm)
22 ft (6.7m)
18 x 8.50 x 8 (4 ply rated)
1,200 lbs (540kg) including operator, passenger, accessories and cargo; 800 lb (360kg) max. bed load
45 in wide, 36 in long, 13.75 in deep (114cm x 91cm x 35cm), 13 cu ft (.37 cu m)
Front: Flexible RIM plastic. Rear: Lightweight steel
Rotomolded crosslink polyethylene. Hinged, removable tailgate
Tubular steel with E-Shield™
Dash mounted key switch, reverse warning indicator, integral handgrip on hip restraints, manual forward/reverse selector



Divider slots/Threaded Inserts  
(1000/1200 Only)



Multi-position Tailgate  
(1000/1200 Only)



\*\*Dash Mounted FNR Switch  
(1000 Only)



State of Charge Meter  
(Electric Models Only)



Fuel Gauge  
(Gas Models Only)



Brush Guard/Headlights



12-Volt Power Outlet  
(Gas Models Only)



Rear Hitch Receiver



Locking Glove Box



Clevis Hitch



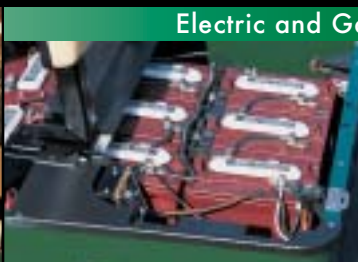
1 7/8" Ball Hitch



1 7/8" Drop Ball Hitch



Top and Windshield



1000E 48-Volt Powertrain



1200G 11 hp Powertrain

Electric and Gas Powertrains

OPTIONS

- 12-Volt Power Outlet (Gas Only)
- Brush Guard/Bumper
- Differential Scuff Guard
- Engine Scuff Guard (Gas Only)
- Fuel Gauge (Gas Only)
- Headlights/Taillights/Brake Lights
- Heavy Duty Battery
- Hour Meter
- Low Oil Pressure Indicator Light (Gas Only)
- Non-Standard Paint Color
- State of Charge Meter (Electric Only)

ACCESSORIES

- Ball Hitch
- Cab Brush Guard
- Cab - Steel
- Cab With Doors
- Defroster/Cooling Fan (Cab Required)
- Electric Heater (Gas Only)
- Enclosure (3-sided, tan/white/camo)
- External Mirrors (Set) (Cab Required)
- Glove Box - Locking - RH and/or LH
- High Altitude Powertrain (Gas Only)
- Hub Caps
- Light Bar w/Beacon and/or Flood Lights
- Power Bed Dump Kit
- Spark Arrester Muffler Kit (Gas Only)
- Steel Door Set (Cab Required)
- Sun Canopy
- Turn Signals with 4-way Flasher
- Vinyl Door Set (Cab Required)
- Windshield
- Wiper Kit (Cab Required)
- Work Light

Specifications Subject to Change

These vehicles are designed and manufactured for off-road use.



E-Z-GO Textron • P.O. BOX 388, Marvin Griffin Road, Augusta, GA 30903-0388  
706.798.4311 • fax 706.796.4540 • 800.241.5855 • www.ezgo.com

©2003 E-Z-GO Division of Textron Inc. • 82170-G1

Locations courtesy of Sage Valley Golf Club, Graniteville, SC  
Augusta Golf & Gardens...Home of the Georgia Golf Hall of Fame, Augusta, GA.